

Things You'll See on the Internet&What They're Called

Link

Looks like: Distinctive text, usually underlined and often a different color than the surrounding text e.g. LINK

Or a link may be a picture, icon, button, etc.

Usage: Place the mouse over a LINK & the mouse pointer (arrow) turns into a hand. When you click the mouse while over the LINK, your web browser will display the web page identified by LINK that is, it will GO TO the new page

Remember ... see the hand before you can grab the next web page!

Text Entry Box

Looks like:

Usage: Place mouse over the text entry box and see the " I " (I-beam). Click and see the blinking " | " (vertical bar)
You only have control of keyboard entry of characters at the blinking " | " (vertical bar)


You can move the mouse anywhere to not interfere with your view of the text entry

Common ones: Location, site bar to enter a web page in "computer-eeze"
Name and address fields in a form
The place to compose email
Search boxes (usually followed by a search command button)

Things You'll See on the Internet&What They're Called


Pull Down Menu

Looks like: 

Usage: Select ONE choice from a set of well-defined choices such as list of the U.S. states
Click on the  to expose the choices available
Position the mouse over your choice to highlight it, then click to select it

Multiple Select - Pull Down Menu

Looks like: 

Usage: Looks the same as the Pull Down Menu BUT
by holding down the control key on the keyboard you can select multiple items (e.g. states with coast line)
Click on the  to expose the choices available
Position the mouse over your choice(s) to highlight it, then click to select it. To select more than 1, hold down the CTRL key as you click.

Things You'll See on the Internet&What They're Called

Radio Buttons

Looks like:
Yes No Undecided

Usage: Select ONE choice from a few (usually 2 to 5) well-defined choices such as Yes/No, Breakfast/Lunch/Dinner
Click on the to select your choice instead of the defaulted choice represented by
Your choice will be then be reflected as

Checkboxes

An example
looks like:

My exercise schedule:

M T W Th F Sa Su None

Usage: Select MORE THAN ONE choice from a several well-defined choices such as the months of the year, days of the week and so on.
Click on every you wish to select
Your choices will be then be reflected as

Things You'll See on the Internet&What They're Called

Command Buttons

Looks like:



Usage:

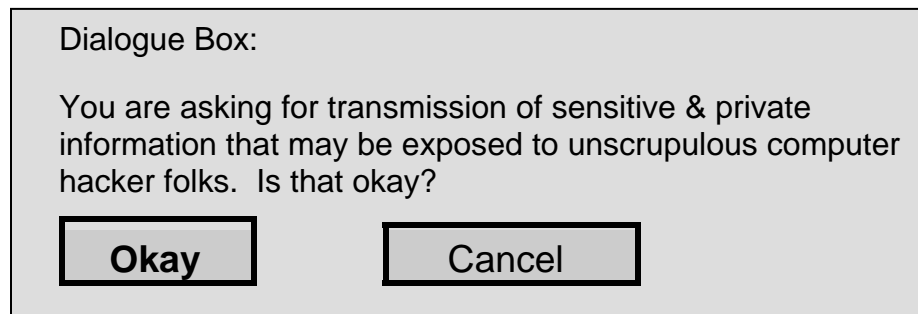
Usually associated with a text entry box

Has a “command” word in the box such as “Search” , “Go” , “Continue”, “Clear”, “Find”, “Select”, “Yes”, “Complete”, “Save”

Click on the command button appropriate to your need – usually the “Search” or “Continue” button

Dialogue Box

Looks like:



Usage:

Appears when the computer needs to tell you something and expects you to respond

Read the text. What is the computer trying to tell you?

Decide on the appropriate action and click on the corresponding command button.

Usually a default choice is bolder, darker and can be selected by pressing the “Enter” key on the keyboard

Often these don't matter, so select the default, bold choice.